



PEEKING SANTA

*The Battle to meet Santa this
Christmas*



WWW.XMASBOARDGAMES.COM

SEEKING SANTA

The Story so Far...

Deep within the Forest you and your friend are exploring, chasing excitement and adventure on Christmas Day.

Buried underground and hidden in the snow you find what you are looking for, a glowing treasure. As you pick it up it starts to show you the way to Santa's hidden grotto, just ahead.

Before you can take another step, an army of snowmen arise from the ground, standing as still as statues they say to you...

"Only one of you may meet Santa, you will need to prove who deserves this the most by using your skills of planning and strategy to win"

In Seeking Santa, you command an army of Snowmen and battle against your fellow player to be the first to meet Santa!

Two ways to play

Twist Game (pages 3 - 5)

This version of the game lets you use magical Christmas items that you find in the forest to help you in your battle to meet Santa. It can be more suited to younger players, before they progress onto the Strategy Game.

Strategy Game (pages 6 - 7)

Players will focus on using skills of strategy and planning, proving to Santa that they can beat their opponent without the help of magic items or luck!

Twist Game

Game Type One: The Twist Game

Aim to be the first player to get 2 of your Snowmen to Santa!
You can choose between moving your Snowman Army or trying to find magical Christmas items to help you win.

Game Set Up

Player 1 starts and controls the Blue Snowmen and the Black Grand Snowmen

Santa is placed in the centre of the Board

A square represents a Board space

Highlighted squares are Shortcuts (Blue or Purple border)

Player 2 controls the Red Snowmen and Green Grand Snowmen

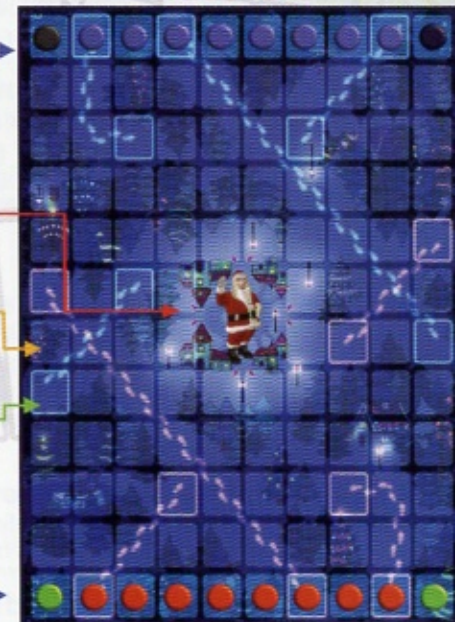


Shuffle the Christmas Forest Cards and place them in a pile by the Board



Place the 3 White Snowmen near the Board.

PLAYER ONE



PLAYER TWO

SEEKING SANTA

How to Win

You win by having 2 Snowmen with Santa at the end of a turn.

Pick 1 of the following 6 moves on your turn

After you have played your move, it becomes the next player's turn.

- 1 Move one of your Snowmen**
Normal Snowmen are coloured Blue or Red. These can move 1 space up, down, left or right.



- 2 Move one of your Grand Snowmen**
Grand Snowmen are coloured Black or Green. They move normally, or **once per game** can take unlimited steps, up, down, left or right. After using this special move, they melt and become a normal Blue or Red Snowman!



- 3 Use a Forest Shortcut**
Shortcuts allow you to move from the first highlighted space to the last! Move along the footprints shown, ignoring any pieces in the way. You can travel in either direction but can only use the shortcuts for your player (Blue for player 1, Purple for player 2).



- 4 Capture another player's Snowman!**
Move a Snowman or Grand Snowman onto another player's piece to remove it from the Board.



- 5 Take A Christmas Forest Card!**
Take a card and search for helpful Christmas treasure or friends! (See next page).



- 6 Move to Santa!**
Any Snowman can move to Santa from a space shown. If another player's Snowman is already there when you arrive remove it! Removed Snowmen are taken off the Board and no longer count towards the total of 2 needed to win!



Find treasure or helpful friends by using Christmas Forest Cards!

Use your turn to pick a Christmas Forest Card and gain access to hidden treasures in the Forest. Some cards will help you and some will hurt your opponent.

After a card has been used, return it to the bottom of the deck. Cards say if you can use them straight away or not.



Santa
Amazing! You found Santa himself! He lets you place any 1 Snowman with him straight away.



Helpful Times
In the spirit of Christmas both players work together and can move any Snowman 1 space.



The Helpful Pup
Yay, a friendly guide dog! He lets you move any Snowman to the start of any shortcut on your side of the board.



Empty Forest
Nothing happens, what a dud! Return the card to the bottom of the deck.



King Krumpet
The Forest King, what an angry grump! The King captures and removes a Snowman of your choice from the Board



The Snowman
Place (or move) a White Snowman onto the board. A White Snowman stops any player from moving to the Board space it is on.



The Unicorn
These beautiful animals can melt any one White Snowman of your choice and remove them from the Board. You can play this card when you want.



Christmas Heart
This Christmas gift lets you bring any Snowman back to life when you want to! Place the revived Snowman on any starting space on your side of the Board.



Reindeer
Ahh Comet! What a find! He lets you move any Snowman 2 spaces.

Strategy Game

Game Type Two: The Strategy Game

The aim of the game is to be the first player to get 2 of your snowmen to Santa in the centre of the Board! Calculate your moves and plan ahead. There are no Forest Cards this time - this game will prove who is the best without any luck involved, just like a game of Chess!

SEEKING SANTA

Game Set Up

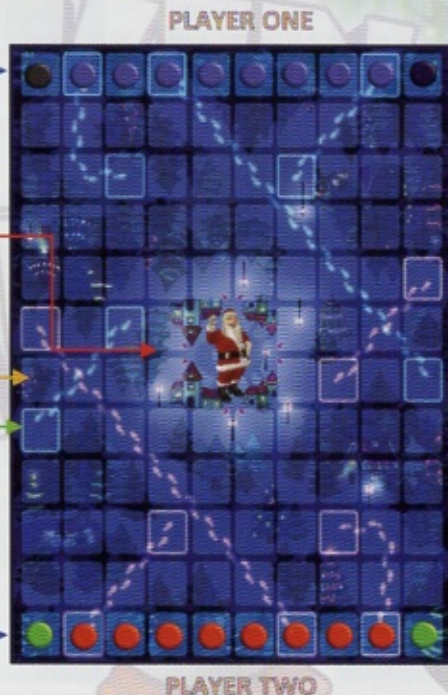
Player 1 starts and controls the Blue Snowmen and the Black Grand Snowmen

Santa is placed in the centre of the Board

A square represents a Board space

Highlighted squares are Shortcuts (Blue or Purple border)

Player 2 controls the Red Snowmen and Green Grand Snowmen



Visit www.XmasBoardGames.com for video tutorials

Twist Game

How to Win

You win by having 2 Snowmen with Santa at the end of a turn.

SEEKING SANTA

Pick 1 of the following 5 moves on your turn

After you have played your move, it becomes the next player's turn.

1

Move one of your Snowmen

Normal Snowmen are coloured Blue or Red. These can move 1 space up, down, left or right.



2

Move one of your Grand Snowmen

Grand Snowmen are coloured Black or Green. They move normally, or **once per game** can take unlimited steps, up, down, left or right. After using this special move, they melt and become a normal Blue or Red Snowman!



3

Use a Forest Shortcut

Shortcuts allow you to move from the first highlighted space to the last! Move along the footprints shown, ignoring any pieces in the way. You can travel in either direction but can only use the shortcuts for your player (Blue for player 1, Purple for player 2).



4

Capture another player's Snowman!

Move a Snowman or Grand Snowman onto another player's piece to remove it from the Board.



5

Move to Santa!

Any Snowman can move to Santa from a space shown. If **another player's Snowman is already there when you arrive remove it!** Removed Snowmen are taken off the Board and no longer count towards the total of 2 needed to win!



Planning how to get 2 Snowmen to Santa without one being captured in between your turns is key! **Good luck impressing Santa** with your skills of cunning and strategy!

Other Games Available now at
www.XmasBoardGames.com



Christmas Eve - The Race to Help Santa

The top-rated Christmas game, made to be a family tradition for years to come.

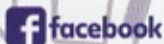
Amazon's Choice

For Christmas Board Game on multiple occasions in Nov and Dec 2018 and 2019



Once Upon A Christmas

A fast-paced Christmas story telling game for all of the family.

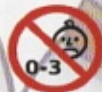


★★★★★
4.9 out of 5 stars
Rated by Our Customers



WARNING!

CHOKING HAZARD -- Small parts. Not for children under 3 yrs.



WARNING: not suitable for children under 36 months. Choking Hazard. Contains small parts. Game to be enjoyed under the direct supervision of an adult and contains small parts.

Copyright© 2020 JPJOSSON All rights reserved. Seeking Santa is a registered trademark. JCA Advisory Enterprises - 132-134 Great Ancoats Street, Manchester, UK. Made in China.

FIRST EDITION